



## Welcome from Rachel Robinson, Chief Executive at LPW

Thank you for your interest in the role of headteacher at LPW School.

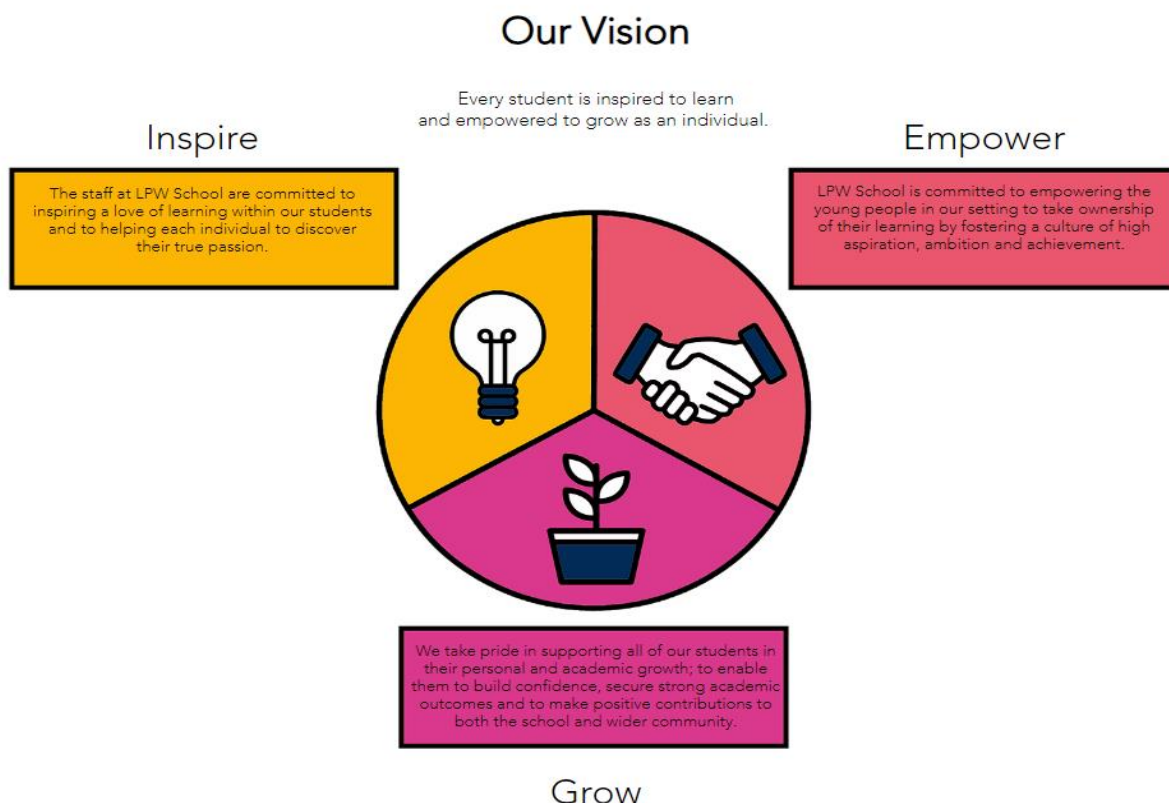
Welcome to LPW School, a full-time alternative learning provision for young people aged 14 - 16 based in the centre of Bristol.

We provide a fresh start for young people who are disengaged from mainstream education. We seek to re-engage young people and provide them with a nurturing and academically rigorous environment.

*"Leaders and staff at the school build strong and positive relationships with pupils. Pupils work hard and take pride in their learning. Pupils say that the school helps them to succeed."* Ofsted July 2022

### Our Mission Statement:

To re-engage young people across Bristol with education in a safe, supportive, and ambitious learning environment that inspires positive outcomes and personal growth. To develop responsibility, respect for self and others and a sense of community, that recognises and celebrates diversity.





**Working at LPW School is so much more than simply working in a school. We put our students at the heart of everything we do, and this informs every aspect of our school; from the curriculum we deliver to the small class sizes and the times of our day.**

If you reflect on why it was that you entered education, you'll doubtless recall a desire to improve the life chances of young people and be empowered to have a genuine impact, rather than simply being a cog in an exam factory. This is LPW's vision, and we welcome the opportunity to work with likeminded practitioners who are guided by a strong moral compass and feel passionately about supporting young people.

You'll very quickly realise that we're pretty unique as a school and we take great pride in this. As you come to know us better, you'll see that we operate in a way that is very different to any other school, whether that be through our innovative curriculum offer, our trauma recovery centred approach or our culture, which often feels more like a family than a school.

When asked why or how we do what we do at LPW School, one word comes to mind: **'dare.'**

We **dare** to be different. Different from the schools that have not met our students' needs over and over again

We **dare** to be ambitious. We, as a school, want to be recognised as outstanding, and we're equally ambitious for our students, wanting and expecting them to flourish and achieve their goals.

We **dare** to be brave. We make brave choices in our approach that most settings would not dare to do. The young people we work with demonstrate their bravery every day they spend with us, by attending despite their previous experiences, by learning to trust adults, and by daring to take risks in their learning and enriched curriculum activities. Our staff all made the brave decision to shun an easier job elsewhere, embracing the challenge of working at LPW, where no two days are the same.

For us, our role is to support the whole child. This means far more than simply teaching them core curriculum subjects; it means supporting them to attend, helping them to develop trusting relationships with both adults and peers, empowering them to take risks in a safe way and helping them to recognise and reflect on behaviours and incidents that happen throughout their time with us.

It is also about providing opportunities that they would not otherwise have and exploring learning that extends far beyond the formal curriculum and provides valuable life skills and knowledge that supports our students to flourish long after they have left our setting.



To fully understand and appreciate our approach it is crucial that you understand our core values and also the beliefs and research that underpins the approach we take to education at LPW.

**At the heart of our school are our 5 core values:**

1. Curiosity
2. Compassion
3. Respect
4. Ambition
5. Reflection

These values shape every decision that we make, both about our curriculum and in wider school life. We firmly believe that our staff epitomise these values and use their experience and passion to embed them within daily school life and routines.

**We want our students to flourish and to become:**

1. Curious learners
2. Compassionate young people
3. Respectful members of their community
4. Ambitious in all they do
5. Reflective in their approach

We do this by taking an approach that differs from any previous experience of education our students will have had. We maintain a strong sense of academic rigour through our formal curriculum that offers core subjects and qualifications from Entry Level, up to GCSE, making it accessible to all young people. This is combined with an active and engaging enriched curriculum that encourages our students to take risks, to be playful, and to spend time in the outdoors, experiencing the numerous health benefits, both physical and mental, to being in nature.

LPW School benefits from being part of the wider organisation. The play and youth team brings a depth and breadth of knowledge and expertise which the school has embedded at the heart of its approach and curriculum. In turn, the academic expertise within the school plays a fundamental part in how LPW designs and delivers its play and youth programmes that support children and young people to stay in mainstream education. The combination of play and youth work approaches with academic ambition and rigour is a powerful one, and one



that we are proud to have developed to support some of the most vulnerable children and young people to continue their educational, social, and emotional journey.

A role like this is not for the fainthearted, but, for the right person, it could be the defining role of their career. One that allows them to bring about meaningful change and work with some of the most amazing young people.

Please do get in touch to arrange an informal conversation with the Chief Executive, Rachel Robinson, and to arrange a visit to the school if you would like.

Please contact India Capon, Business Services Officer, in the first instance at [recruitment@lpw.org.uk](mailto:recruitment@lpw.org.uk)

Thank you again for your interest in the role and we look forward to hearing from you!